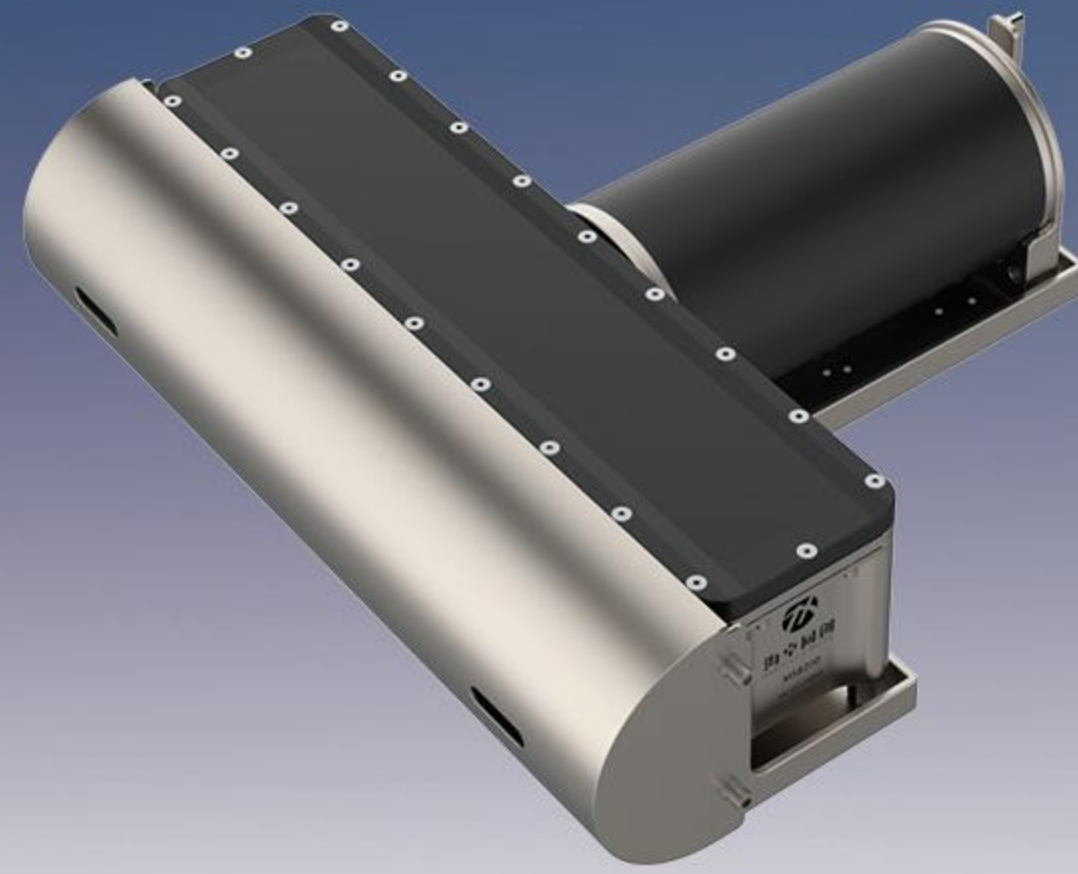


MS8200

200kHz Multibeam Echo Sounder



One system to achieve multiple functions, excellent algorithms to interpret different water quality



Efficiency

Maximum 160° Swathe Coverage, which enhance working range to more than 8 Times of Depth. Its sounding range is more than 400m, with ping rate up to 60Hz, MS8200 is suitable for high end hydrographic application.



One System Multi-function

MS8200 is with multi-functions that can perfection accomplish diversify missions including 3D underwater terrain mapping ocean construction survey, water imaging multi-objects detection etc.



Diverse Water Area Survey

No matter in river or coastline, clear or muddy water, fine structure or big range surveying, MS8200 works well and will play important role to get accurate result through adjusting working modes.



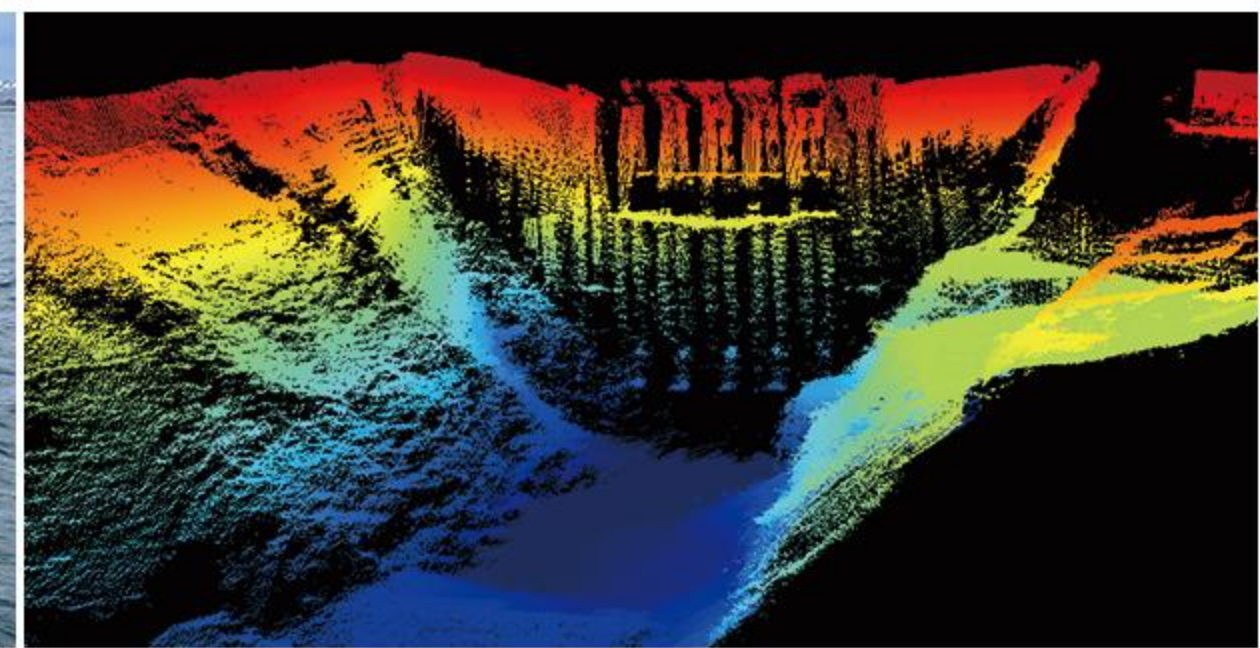
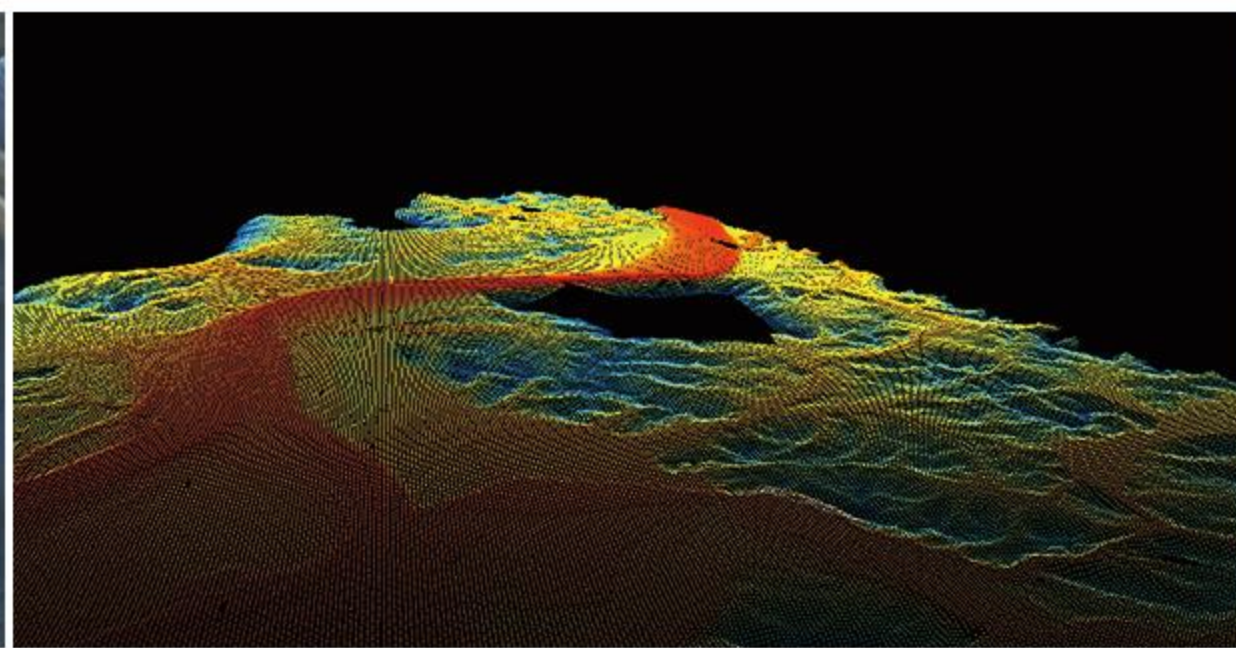
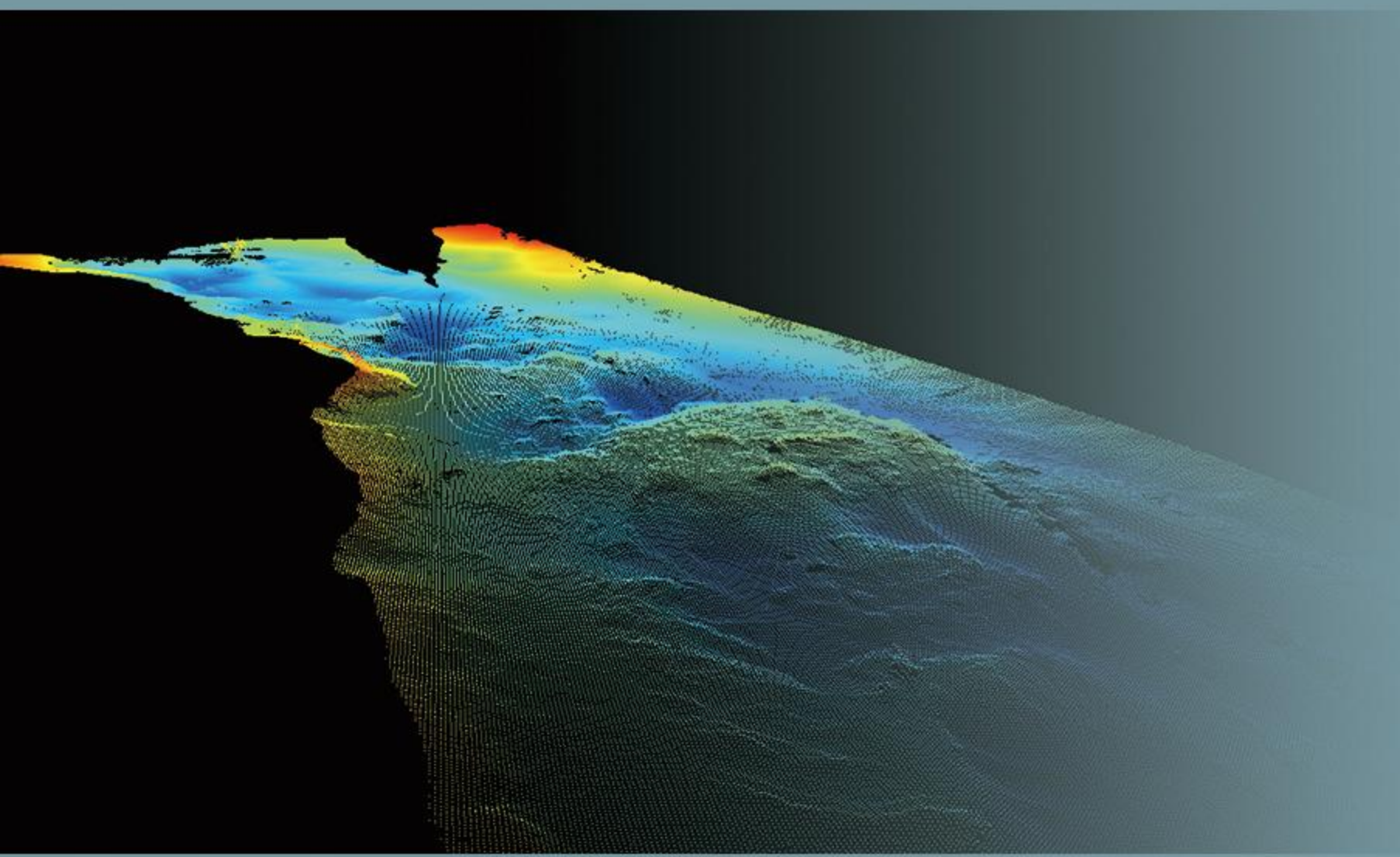
Beijing Hydro-Tech Marine Technology Co.,Ltd.



Learn More

MS8200 200kHz Multibeam Echo Sounder

MS8200 is a new generation of multibeam echosounder that is specially designed for professional oceanographic mapping and deep channel surveying. The system is based on brand new platform which was re-designed after years of sounding technology accumulation. MS8200 does not only deliver reliable performance but also with the most advanced technologies. It can work well even in harsh environment, this is why many customers trust MS8200 echosounder and give it numerous compliments. MS8200 deserves it!



Recommendation

- ✓ Professional survey and mapping team, large-scale shallow ocean survey research users;
- ✓ Marine survey, channel survey;
- ✓ Water conservancy and hydrology, port maintenance, wind farm operation and maintenance
- ✓ Oil exploration and other large-scale professional applications

Application Scenario



Sweep Survey



Navigation Scceptance



Resources Survey



Offshore Construction

Vehicle



Small and medium ship



Professional survey ship



Technical Specifications

Operating Frequency	200kHz
Number of Beams	512
Vertical Beam Width	1°
Horizontal Beam Width	2°
Swath Coverage	160°
Depth Range	0.5~500m*
Depth Resolution	0.75cm
Operating Mode	Equiangular / Equidistant
Max Ping Rate	60Hz
Signal Form	CW/Chirp
Pulse Width	30us~8ms
Max Working Depth	50m

* Depending on environmental conditions.



Physical Specifications

Transducer Size	500mmx457mmx147mm
Transducer Weight	22.6kg (In the air) 7.5kg (In water)
Deck Unit Size	200×135×80mm
Deck Unit Weight	1.75kg
Operating Temperature	-2°C~40°C
Storage Temperature	-20~55°C
Power Supply	DC10-32V/AC110~240V
Power Consumption	80W
Cable Length	Standard 15m (Optional)



Software

Display & Control Software	HydroQuest
Navigation & Data Collection Software	HydroNavi
Compatible with	Hypack, Qinsy, BeamworX



Special Feature

Near Field Focus	Yes
Bottom Tracking	Yes
Water Column	Yes
Side Scan Imaging	Yes
Muddy water survey	Yes
Real-time Roll Stabilization	Yes



Auxiliary Equipment

SVS	Built-in SVS1500
SVP	Optional SVP1500
IMU	Optional
Positioning	Optional



Optional Positioning and Attitude Equipment Specifications

Optional positioning and attitude equipment model	POS08	POS15	POS25
Heading Accuracy(GNSS Effective)	0.01°, 4mBase Line 0.02°, 2mBase Line	0.015°, 4mBase Line 0.03°, 2mBase Line	0.06°, 4mBase Line 0.08°, 2mBase Line
Attitude Accuracy(GNSS Effective)	0.01°, Real-Time RTK 0.008°, processed	0.02°, Real-Time RTK 0.015°, processed	0.03°, Real-Time RTK 0.025°, processed
Heave Accuracy	5cm or5%h,2cm or2%h		
Horizontal Positioning Accuracy	±8mm+1ppm(RTK、 PPK), 10cm(PPP、 Satellite station difference), 2-5m(DGPS)		
Auxiliary Positioning Data	1、 Support Qianxun RTK CORS 2、 PPK PP-RTK supported		

**All specifications are subject to change without notice.

86-10-5727 5310

Building 5, Yard 33, Jingsheng South 2nd Street, Tongzhou District, Beijing, China

www.hydro-techmarine.com

